

Understanding the Role of Nurses in Promoting Community Health

By: Melissa New BSN, RN, FNE, Public Health Nurse

Jefferson County Health Department



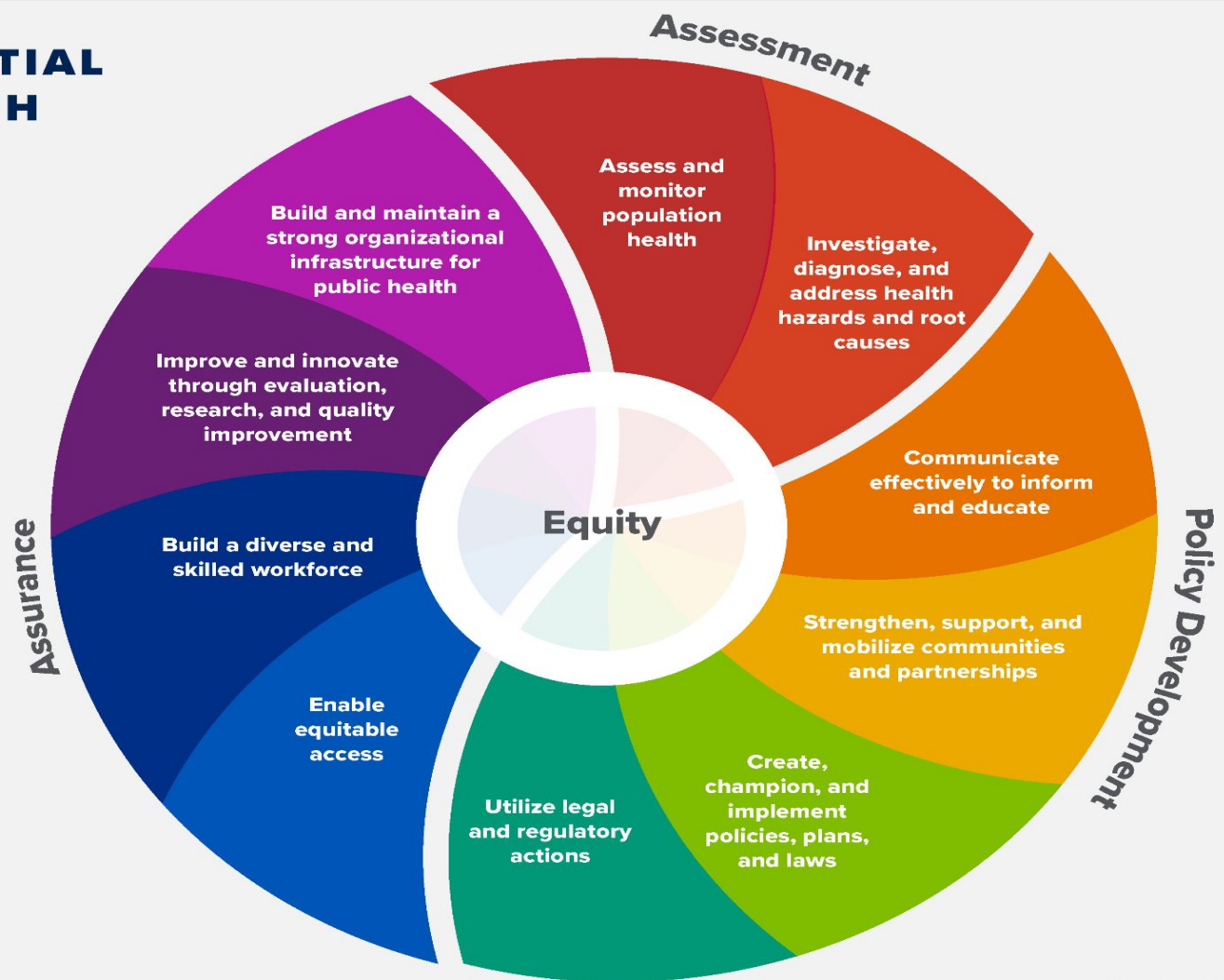
Objectives

- General overview of Public Health
- Foundational Areas
- Passions and Drawbacks of Public Health
- Skills
- Conclusion

THE 10 ESSENTIAL PUBLIC HEALTH SERVICES

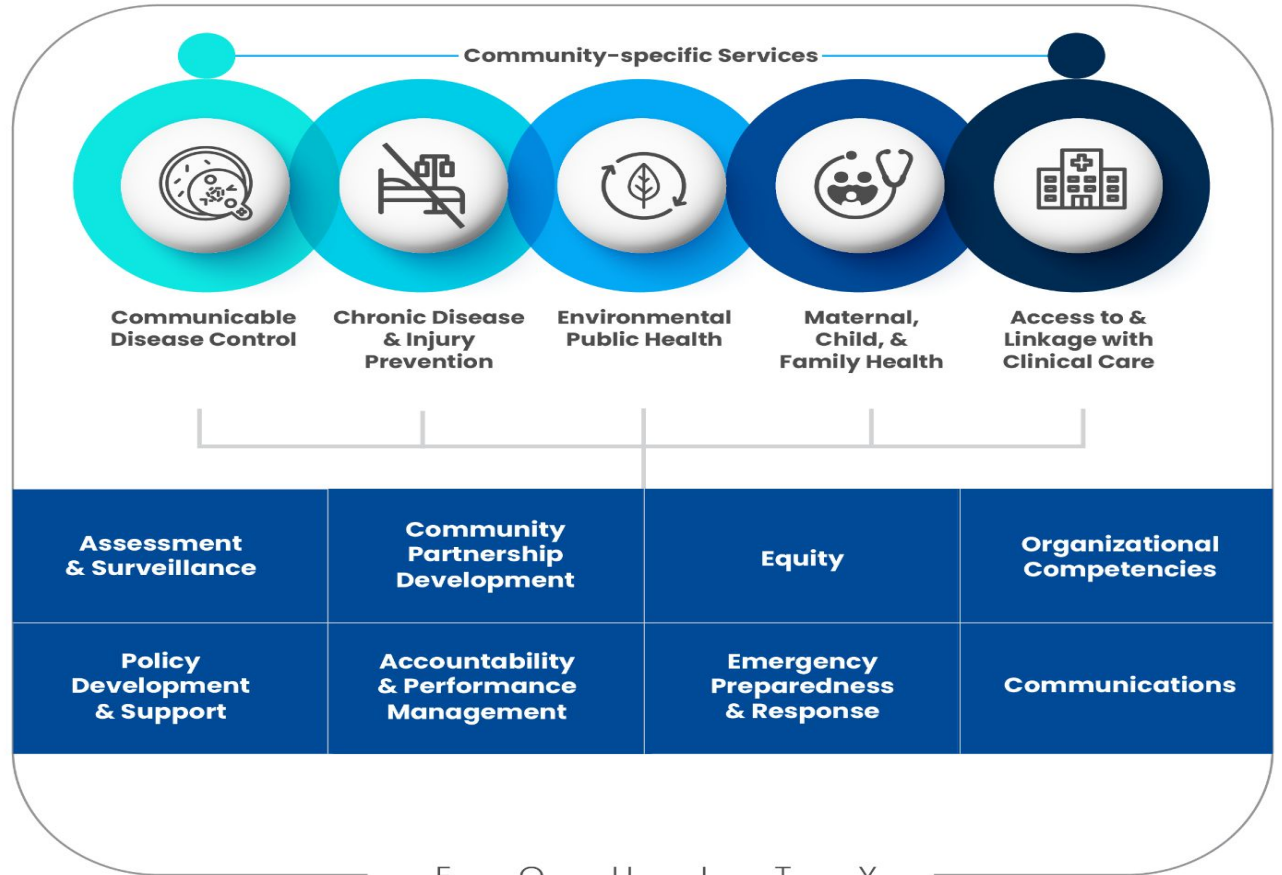
To protect and promote the health of all people in all communities

The 10 Essential Public Health Services provide a framework for public health to protect and promote the health of all people in all communities. To achieve optimal health for all, the Essential Public Health Services actively promote policies, systems, and services that enable good health and seek to remove obstacles and systemic and structural barriers, such as poverty, racism, gender discrimination, and other forms of oppression, that have resulted in health inequities. Everyone should have a fair and just opportunity to achieve good health and well-being.



Foundational Public Health Services

Foundational Areas



What Are Foundational Public Health Services (FPHS)

This defines a minimum package of public health capabilities and programs that no jurisdiction can be without. The Foundational Public Health Services was updated in 2022 to assure that it reflects the evolving nature and modernization of governmental public health.

This framework outlines the unique responsibilities of governmental public health and can be used to explain the vital role of governmental public health in a thriving community; identify capacity and resource gaps; determine the cost for assuring foundational activities; and justify funding needs.

Communicable Disease Foundational Area

- Communicable Disease Follow-up
- Disease Prevention Education
- Outbreak Surveillance
- Rabies Testing, Follow-up
- STI Testing



Chapter 252 and DHS 145 outlines requirements

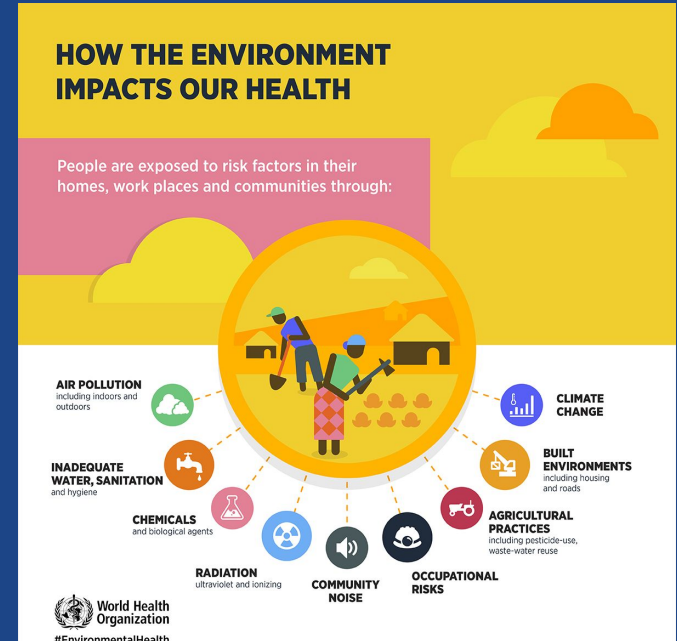
Chronic Disease & Injury Prevention Foundational Area

- Drug Free Communities Coalition
- Overdose Fatality Review Team
- Child Death Review Team
- Safe Sleep Program
- Child Safety Passenger Program
- Childhood Lead Poisoning Prevention
- Community Education Presentations
- CPR
- Public Health Vending Machine
- Head Start Consultation



Environmental Health

- Retail Food Inspections
- Tattoo and body piercings inspections
- School, lodging, and campground inspections
- Human Health Hazard complaints
- Pool/Hot tub water sampling
- Beach water sampling
- Environmental Lead assessments
- Radon Testing



Maternal Child and Family Health Foundational Area

- Prenatal Care Coordination (PNCC)
- Breastfeeding Support
- Parenting Groups
- Well Water Testing
- ASQ Screenings
- School & Childcare Consultations



Access & Linkage with Clinical Care Foundational Area

- Vaccines for Children (VFC)
- Vaccines for Adults (VFA)
- Pregnancy Tests
- TB skin tests
- IGRA Tests
- Blood Pressure Screenings
- Mental Health Injections
- Vivitrol Injections
- Mass Vaccination Clinics
- Hearing and Vision Clinics

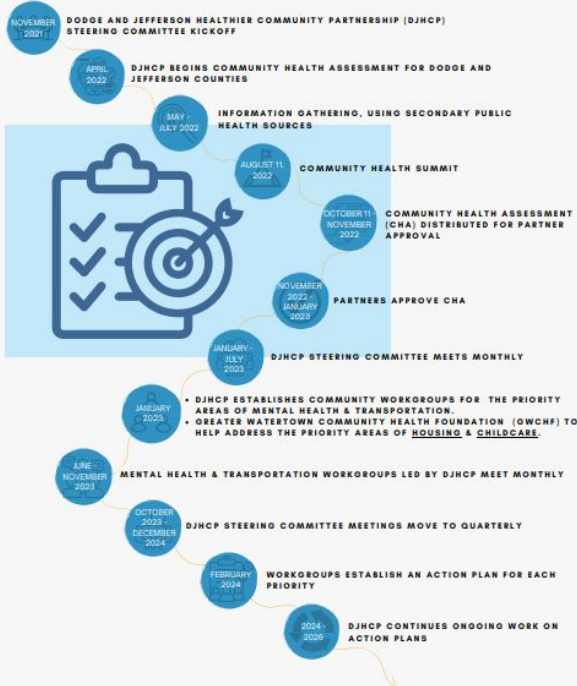


Funding Streams

- Public Health Tax Levy
- Federal Grants
- State Grants
- Consolidated Grants
- Fees for Services
 - Vaccines
- Donations



Community Health Assessment and Improvement Plan Timeline



JCHID
Jefferson County Health Department

2022-2026 Strategic Plan

Our mission is to...
promote the health, safety, and well-being of all people in Jefferson County.

Our vision for Jefferson County is...
Healthy People, Communities and Lifestyles

Jefferson County
Health Department
P: 920-674-7275
Health@JeffersonCountywi.gov

Organizational Values

Advocacy	Collaboration	Empowerment	Health Equity	Integrity	Respect	Evidence Based
----------	---------------	-------------	---------------	-----------	---------	----------------

Passions of Working in Public Health

- Making a broad impact on communities
- Empowering individuals to live healthier lives
- Opportunities to collaborate with diverse teams
- Implementing new programs
- One of the only nursing fields you have the time and the resources to educate on a wide range of health topics
- Implementing new programs

EVENTS



EVENTS



Drawbacks to Working in Public Health

- Limited funding or resources for programs
- Emotional toll of addressing systemic health inequities
- Balancing administrative duties with community outreach
- Potential for burnout in high-stress or crisis situations
- Salaries tend to be lower than bedside nursing

Ideal Skills for Working in Public Health

1. **Empathy and Compassion**

- Ability to connect with diverse populations and understand their challenges.

2. **Adaptability**

- Thriving in unpredictable situations, such as emergencies.

3. **Strong Communication Skills**

- Explaining complex health information clearly and effectively.

4. **Critical Thinking and Problem-Solving**

- Developing practical solutions to health challenges.

5. **Resilience and Patience**

- Navigating bureaucratic and systemic barriers without losing focus.

Conclusion

- **Key Takeaways:**

- Public health nursing is vital for community well-being
- Public Health Nurses provide education, prevention strategies, resources and advocate for systemic changes
- Passions include meaningful impact; challenges include limited resources
- Ideal nurses possess empathy, adaptability, and strong problem-solving skills

- **Call to Action:**

"Public health nurses are the backbone of community health. Let's advocate for resources and recognition to support their work."

Resources

PHAB -

<https://phaboard.org/center-for-innovation/public-health-frameworks/the-foundational-public-health-services/#:~:text=Health%20departments%20provide%20public%20health,and%20injury%20%E2%80%93%20these%20are%20also>

https://www.google.com/search?sca_esv=89bf5c8dfd0dab45&rlz=1C1GCEB_enUS1025US1025&q=communicable+disease+pictures&udm=2&fbs=ABzOT_CWdhQLP1FcmU5B0fn3xuWpA-dk4wpBWOGsoR7DG5zJBr9f-W3h_R3HVJ-z4uJntm7S42ilFcJ4Lp_1EvpfsHF6XArBqCAi1YaF_O-xJJYmFpG0NnHwnGL1xAEDlilzrll0ohI_HINrmM25gF0u-fAXjX6L3xiEk-mS-4dxHg9bxJhAEIP3qogglpUaqoR47lrWeoKnRt6IOUC9RvwLCjsNR_nzOQ&sa=X&ved=2ahUKEwinjYXr0ciMAxUBMNAFHeF2DH oQtKgLegQIDxAB&biw=1536&bih=695&dpr=1.25#vhid=3fsWHwpJEAnQpM&vssid=mosaic